

## BREAKING NEWS

dríguez Are Engaged! Soccer Star's Fiancée Shows Off Massive Diamond Ring



Article continues below advertisement

[Home](#) > [Entertainment](#) > [Travel](#)

## OK! ENTERTAINMENT

## Why The DoubleTree Hilton Hotel In The West End Is Your Perfect Cozy Central London Base

Advertisement



SOURCE: DOUBLETREE BY HILTON LONDON – WEST END.



OK! Staff



July 28 2025, Published 9:11 a.m. ET



Advertisement

Looking for a London stay that's got style, substance and a location so good it's practically showing off? Say hello to the [DoubleTree by Hilton London](#) – West End.

Set in the leafy heart of **Bloomsbury**, this elegant Edwardian building might look traditional on the outside, but inside? It's all about modern comfort with a dash of classic London glamour.

Just a short stroll from **Covent Garden**, **Oxford Street**, the **British Museum**, and the **West End's theatre district**, the hotel is the ideal base for everything from retail therapy and culture hopping to romantic getaways and stylish staycations.

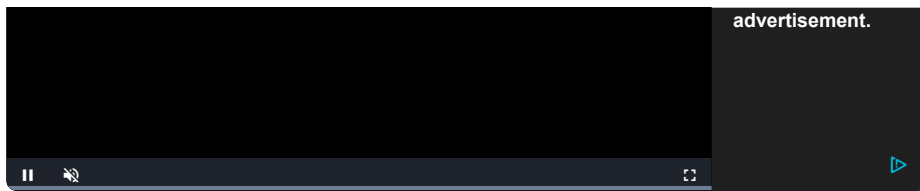
Whether you're in town to channel your inner Bridgerton, max out your credit card shopping on Bond Street, or take a self guided pub crawl down one of the city's bustling streets, this hotel puts you right in the middle of all the London action

### City Buzz Outside, Cozy Vibes Inside

AD Click to learn more

Fabrik

Content will  
resume after this



Advertisement



SOURCE: DOUBLETREE BY HILTON LONDON – WEST END.

From the moment you step through the stately Edwardian façade and into the welcoming lobby, you'll get it: this isn't your average hotel. Think historic charm meets modern comfort, with a dash of West End glam.

The check-in is smooth, the staff are all smiles, and then — boom — you're handed one of Hilton's signature warm chocolate chip cookies. You'll feel like royalty, but with better snacks.

Despite being in the centre of one of the world's busiest cities, the hotel manages to feel like a calm, cozy retreat.

The décor is sophisticated without being stuffy, and there's a timeless elegance to the interiors that makes it easy to settle in.

Whether you're kicking back in the lounge with a coffee or people-watching by the big windows, this is a hotel that knows how to balance buzz with comfort.

## A Room for Every Kind of Stay



Advertisement

Let's talk rooms. With 261 guest rooms and suites, there's something for everyone — from weekenders and work travelers to couples, solo explorers, and families.

The Standard Double and Twin Rooms are perfect for a no-fuss, comfy city break, while the **Deluxe King** rooms give you a little extra space to stretch out after a long day on the town.

But if you're really looking to level up, book one of the **Superior Suites**. These spacious havens come with a separate living area, luxe bedding, plush furnishings, upgraded amenities, and a modern bathroom stocked with crisp robes, fluffy towels, and premium toiletries.

Pro OK! tip? Ask for a higher floor room for charming city views and less street noise. You'll feel like you're floating above the London buzz — in the best way.

## Dine in Style at The Writing Room

MORE ON:  
**TRAVEL**

**Viceroy Washington D.C. Is at the Heart of the Nation's Capital: Here's Why You Should Stay at This Luxe Property**

Advertisement

**Inside Hotel Splendide Royal Roma - The Glamorous Roman Hotel Loved by Traveller's, Celebs and even the New Pope!**

**Inside Boston's Luxurious Celeb Hotspot: The Liberty Hotel, Located in the Heart of Beantown**

**Want OK! each day? Sign up here!**

Enter your email

I WANT IT



SOURCE: DOUBLETREE BY HILTON LONDON – WEST END.

When hunger hits **The Writing Room** is waiting downstairs with warm lighting, chill energy, and a menu that seriously delivers. Named with a nod to the neighborhood's literary past (this *is* Bloomsbury, after all), the restaurant brings a stylish twist to British and international classics.

From hearty full English breakfasts to juicy burgers, seasonal salads, creamy pastas, and comforting mains, there's something here for every taste and mood. The vibe is casual-luxe — ideal for a romantic dinner, a solo unwind, or a cheeky pre-theatre meal with friends.

And if you're just in the mood to sip and chill? The bar and lounge area serves up everything from craft cocktails to classic wines, plus light bites and nibbles for those snacky moments between adventures.

And then there's **The Level Restaurant** on the level below the ground floor that serves up the trademark DoubleTree Wake-Up Breakfast, and also offers a spacious option for conference lunches and r private dining



events for up to 150 guests.

And of course for those moments when you're snug in your hotel robe and don't want to leave your hotel room, Room service is just a quick phone call away

## West End Location Goals



SOURCE: DOUBLETREE BY HILTON LONDON – WEST END.

Now, let's talk location. If you threw a dart at a map of London and hit the perfect spot for sightseeing, shopping, and stage door selfies, this would be it.

You're a short stroll from **Oxford Street, Soho, Covent Garden**, and the beating heart of **London's theatre district**. Not to mention, **Russell Square** and **Holborn stations** are just minutes away — ideal for hopping on the Tube and zipping to all your favorite London landmarks.

Want to get cultural? The **British Museum** is literally around the corner. Craving a West End musical? You're walking distance from more shows than you can count. Need some green space? **Russell Square Gardens** is perfect for a coffee and a stroll.

Basically, if London were a board game, [DoubleTree by Hilton West End](#) is the hotel on every square you want to land on.

## OK! Final Thoughts

Between the warm service, the central location, the gorgeous building, and the cozy-chic rooms, this is a hotel that understands the assignment. Add in a fab restaurant, glam cocktail bar, and *that* cookie, and you've got yourself a five-star feeling with none of the fuss.

So whether you're here for a romantic weekend, a business trip with benefits, or a London adventure with your besties, the [DoubleTree by Hilton London – West End](#) is your home away from home in London Town.